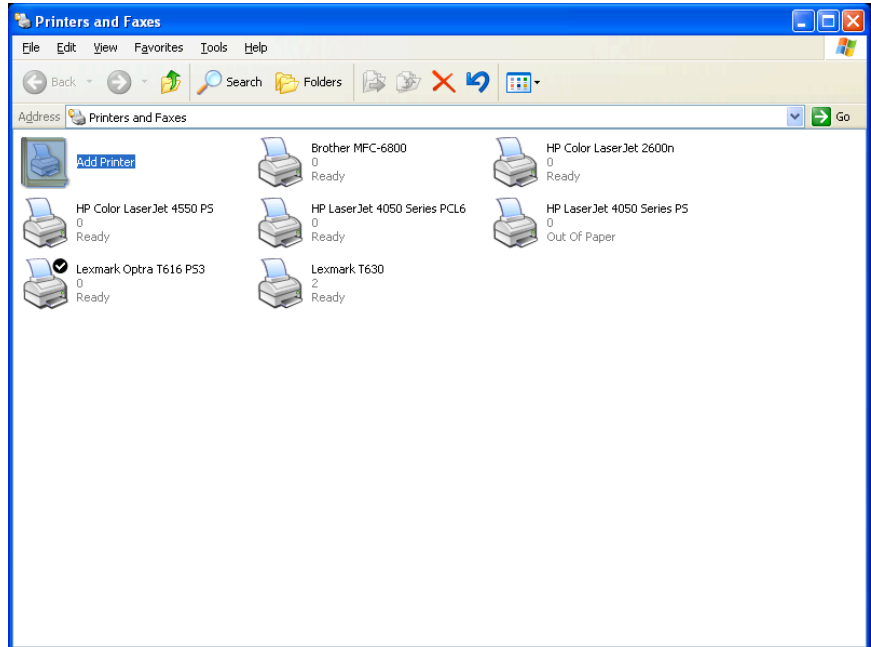


# Setting Up a Network Printer Connection to Your Computer

First, you'll need to obtain the IP number from the printer you intend to connect to.

You can either ask the person responsible for the network to get the number for you, or you can use the menu on the printer itself. (You'll be looking for an item called "Print Configurations")

Click on the **Start** menu, then over to **Settings**, then to **Printers and Faxes**.



Click on the **Add a Printer** icon or menu item to the left.

You will then see this dialog box:

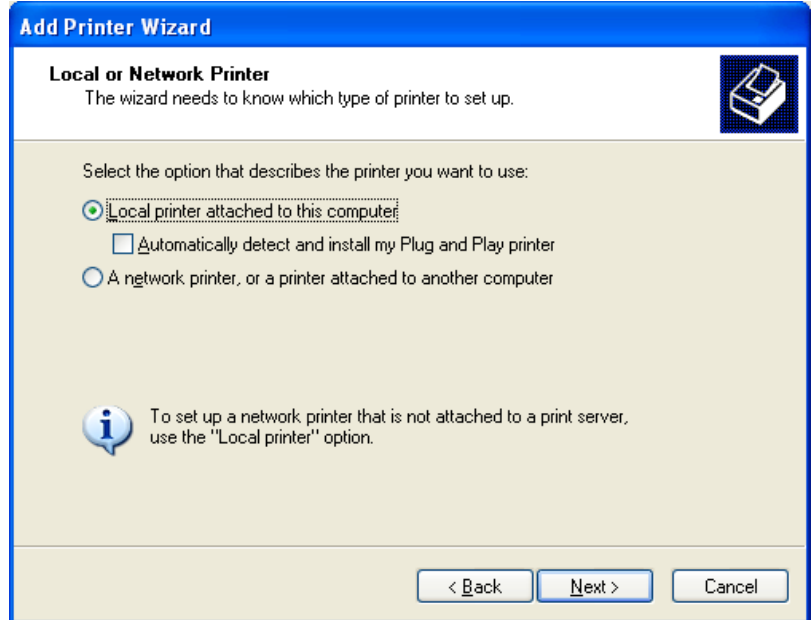
Click **Next >**



Choose **Local Printer attached to this computer.**

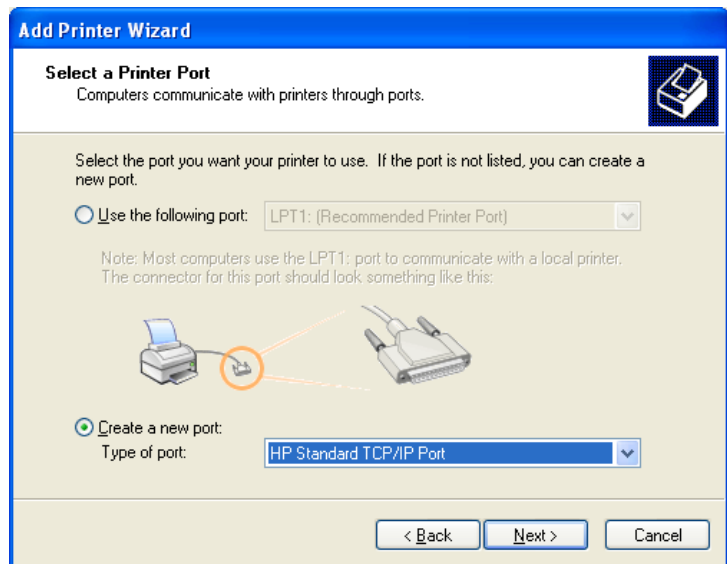
(This may seem counter intuitive, as the printer you are connecting to *is* a networked printer, not connected to your computer, but if you look at the message next to the information bubble, it is somewhat clarified for you.)

Click **Next >**.



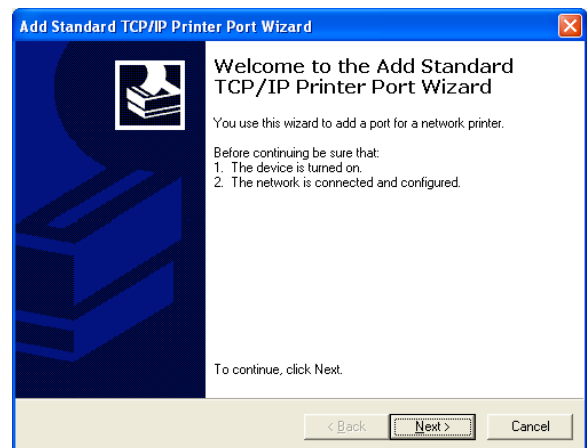
Now you'll see this dialog box. Choose the bottom option. Most of the time, you'll leave the selection on **HP Standard TCP/IP Port.**

Click **Next >**.



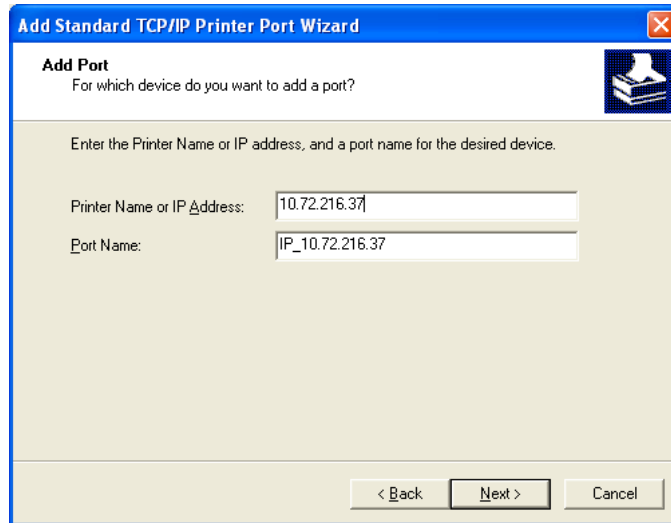
Here is the next dialog box you'll see:

Click **Next >**.



In this dialog box, type in the TCP/IP number (into the top box) you obtained from the network person, or from the printer itself. The bottom box will fill in automatically.

Click **Next** >.



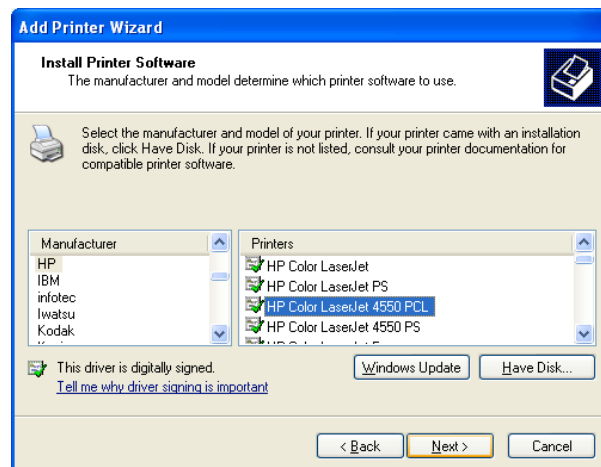
Now you should see this dialog box, confirming the information you provided:

Click **Finish**.



The next dialog box asks you to select the correct drivers for the printer to work with your computer. Here is an example of one choice. Make the choice based on the printer brand and exact model you are connecting to.

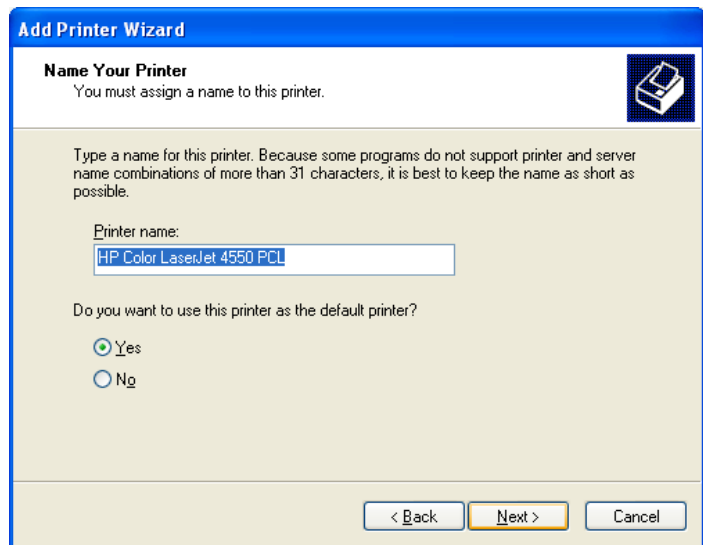
Click **Next** >.



In the next dialog box, you can rename the printer, if you like, to something that might be easier to remember, especially if you have several printers that you connect to.

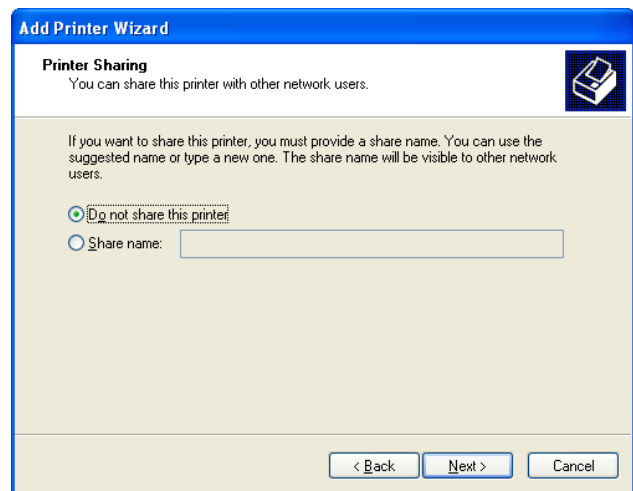
If you want the printer you just set up to be your default (*always*) printer, click **Yes**, otherwise click **No**.

Now click **Next >**.



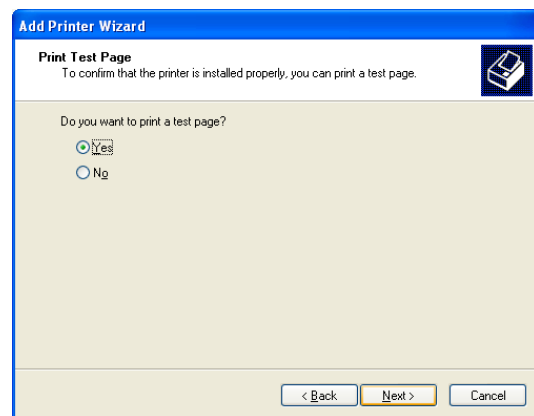
In the next dialog box, most likely, you'll choose, **Do not share this printer**.

Now click **Next >**.



Generally, you'll want to print a test page to confirm that your connection efforts worked out. Click **Yes**.

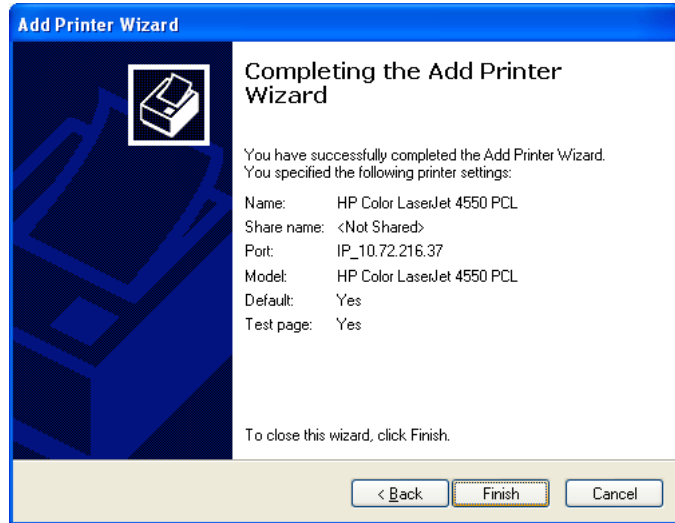
Now click **Next >**.



The next screen is a completion confirmation screen. Click **Finish**.

You're almost done.

You may see the folders *with pages flying* dialog box (moving the printer drivers so they will make the printer work). Wait for that to finish...



Here is the last screen.

Click **OK**. Check to see if your test page came out.

See, now wasn't that easy?

